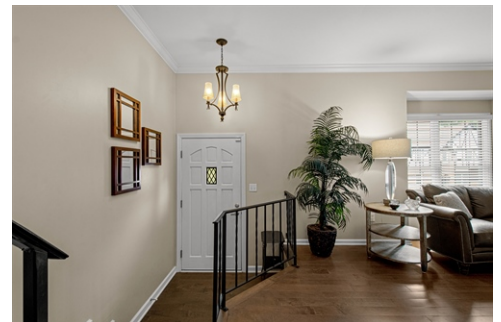


Luxury Living, Low Maintenance



\$ 365,000



313 Kingsberry Circle, Pittsburgh, PA 15234

- » Beds: 2 | Baths: 2 Full, 1 Half
- » Single Family | 1,728 ft²
- » Completely Updated Kitchen with Gray Cabinetry, Granite Countertops, SS Appliances
- » Recently Installed Hardwood Floor on Main Floor
- » Very Versatile Floor Plan on Main Floor
- » More Info: 313Kingsberry.IsForSale.com



Sheryl Morgan
Associate Broker
(412) 997-4907 (Direct)
(724) 941-9400 (X 150)
sheryl@sherylmorgan.com
<http://www.SherylSellsPittsburgh.com/>



Keller Williams Realty
395 Valley Brook Road
McMurray, PA 15317
(724) 941-9400

Welcome to Woodridge in beautiful Mt. Lebanon, where comfort, convenience, and community come together. From the moment you step inside this lovely two-story townhome, you'll feel right at home. The main level opens with a spacious living room and dining room combination, creating an easy flow for everyday living or hosting family and friends. The heart of the home is the completely updated eat-in kitchen, designed with crisp light gray cabinetry, granite countertops, stainless steel appliances, and a cozy breakfast nook. The kitchen opens right into the family room, where a gas corner fireplace adds warmth and charm. Recently installed hardwood flooring ties the space together beautifully. Just off the kitchen, step outside to the concrete patio area, perfect for morning coffee, quiet evenings, or a little fresh air at the end of the day. A convenient half bath completes the main level. Upstairs, you'll find two large primary en-suites, each with its own private full baths. One bedroom offers a large walk-in closet, while the other features a full wall of closets, giving everyone the space they need. The lower level adds even more flexibility with an extra room that could be used as a playroom, den, home office, exercise room, or whatever fits your lifestyle. The laundry area, new HVAC, and hot water heater are also located on this level. A nicely sized two-car garage adds everyday convenience, and the Woodridge community offers amenities

